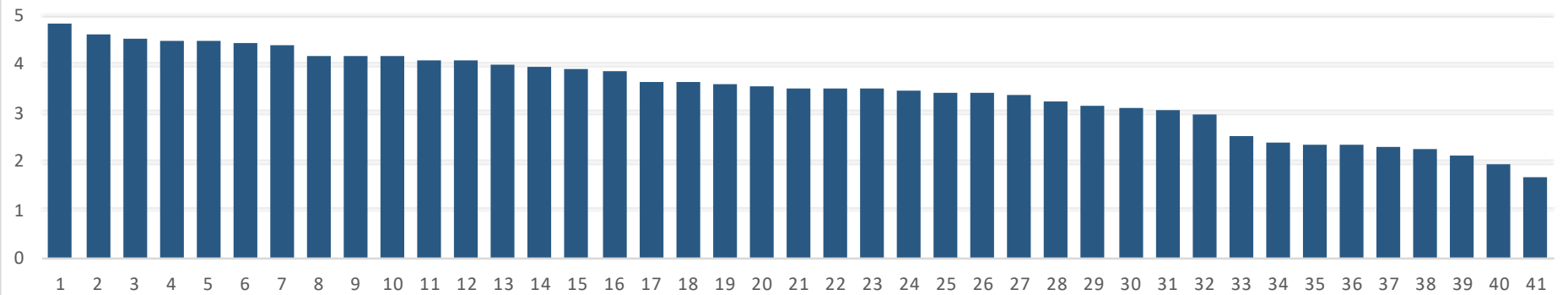


Ideas



Default

- | | | |
|---|---|--|
| 1-Iconic destination that builds pride | 15-Not cliché - not derivative of another icon | 29-Seamless connection - site, Little Italy, SAP |
| 2-Maintainability | 16-Interactive and engaging | 30-Create the world's next iconic landmark |
| 3-Activate the site | 17-Use river as asset - not a barrier | 31-Consider future state San Jose climate 50-100 yrs |
| 4-Attractive and accessible | 18-Demonstrate respect for creek/river area | 32-Family safe and intergenerationally safe |
| 5-Attracts residents downtown | 19-Timelessness - never looks out of date | 33-Affects people on a deeply personal level |
| 6-Respectful of wildlife | 20-Integrated - considers and responds to development | 34-Economically beneficial to local businesses |
| 7-Establish a strong visual presence | 21-Stickiness - visit and linger | 35-Invoke net-zero design principles |
| 8-Visually impactful and conducive for photography | 22-Mindful of its place - shade and light | 36-Financially sustainable |
| 9-Establish a strong visual presence - night | 23-Environmentally sustainable | 37-Establish a strong visual presence - distance |
| 10-Emblematic/relevant - San Jose - An entrance | 24-Reflects multicultural roots | 38-Celebrates agricultural history of the region |
| 11-Invokes sustainable and environmental principles | 25-Integrates comfortable places to sit | 39-Eases environmental restrictions - river access |
| 12-Beautiful | 26-Water | 40-Mindful how it looks from the air |
| 13-Attract tourists from throughout the world | 27-Relationship to Diridon Station | 41-More attractive/enticing than San Francisco |
| 14-Promote economic development | 28-Celebrates unique spirit & culture of innovation | |

Stakeholder Workshop November 21, 2019

Urban Confluence Silicon Valley International Open Ideas Competition								
Item #	Selection Considerations	Score					Total Votes	Average Score
		5	4	3	2	1		
1	Create an iconic destination that builds civic pride and regional pride in San Jose, Silicon Valley, and the region.	17	4	0	0	0	21	4.81
2	Maintainability including ease of maintenance.	17	5	2	0	0	24	4.63
3	Activate the site: this has special meaning for parks and open spaces, as much use as possible, a gathering place, interactivity with the community. Water, music, food, and shade bring people together.	14	7	2	0	0	23	4.52
4	Attractive and accessible for people of all ages and abilities. Something for everyone (kids, adults, elders, couples, families, etc.).	13	8	2	0	0	23	4.48
5	Attracts residents to the downtown area.	11	7	2	0	0	20	4.45
6	Respectful of wildlife.	9	6	2	0	0	17	4.41
7	Establishes a strong visual presence.	12	6	4	0	0	22	4.36
8	Visually impactful and conducive to photography and posting on social media.	10	8	4	1	0	23	4.17
9	Establish a strong visual presence including at night.	11	4	3	1	1	20	4.15
10	Emblematic of and relevant to San Jose. Become the "entrance" to San Jose.	6	6	1	0	1	14	4.14
11	Invokes sustainable and environmental principles in the design.	12	7	2	1	2	24	4.08
12	Beautiful.	12	7	2	1	2	24	4.08
13	Attract tourists from throughout the world.	7	3	4	0	1	15	4.00
14	Promotes economic development of the local community and the region.	10	5	5	3	0	23	3.96
15	Does not look cliché and is not derivative of another icon.	8	8	7	2	0	25	3.88
16	Interactive: not just a photo opportunity. Engaging: touch it, feel it, walk it....	8	8	4	4	0	24	3.83
17	Use river as an asset (not a barrier).	6	10	6	2	2	26	3.62
18	Demonstrate respect for the environment within the Los Gatos Creek/Guadalupe River area (use environmentally sensitive dramatic lighting).	7	4	8	4	0	23	3.61
19	Timelessness: never looks out of date. Attract people to come back again and again to experience and learn.	7	5	6	4	1	23	3.57
20	Integrated: a place to go to check out what's around it, considerate, and responds to all development happening in the area.	7	3	6	2	2	20	3.55
21	Stickiness: makes you want to visit the icon and linger in the park vs. drive-by in a car.	6	3	9	4	0	22	3.50

22	Mindful of its place: the design must be thoughtful related to where it casts shade or produces light.	7	4	9	4	1	25	3.48
23	Environmentally sustainable.	6	5	8	2	2	23	3.48
24	Reflects multicultural roots.	5	7	8	2	2	24	3.46
25	Integrates comfortable places to sit.	5	8	7	5	1	26	3.42
26	Water.	8	4	3	5	3	23	3.39
27	Relationship to Diridon Station (San Jose's multi-modal transportation hub nearby).	5	7	6	4	2	24	3.38
28	Celebrates the unique spirit and culture of innovation of the region.	3	5	10	4	1	23	3.22
29	Create seamless connections between the site and Little Italy and SAP Center (e.g. bridges, walkways, etc.)	3	5	7	8	0	23	3.13
30	Create the world's next iconic landmark.	4	3	8	5	2	22	3.09
31	Consider the future state of San Jose climate (50-100 years, etc.).	6	2	6	7	3	24	3.04
32	Family safe / intergenerationally safe. Not offensive or inappropriate to any age group.	2	6	5	1	5	19	2.95
33	Affects people on a deeply personal level.	3	1	7	7	6	24	2.50
34	Economically beneficial to local businesses (results in greater revenue for businesses).	3	0	6	11	5	25	2.40
35	Invoke net-zero design principles.	1	2	5	9	5	22	2.32
36	Financially sustainable (generates direct and indirect revenue, not a burden on city taxpayers, will an admission charge create equity issues?, integrate businesses). It is not the designers' responsibility to make submittals financially feasible.	3	0	4	5	7	19	2.32
37	Establish a strong visual presence (can be seen from a distance).	0	4	6	3	8	21	2.29
38	Celebrates agricultural history of the region.	0	0	10	9	4	23	2.26
39	Eases environmental restrictions to allow access to the river.	2	2	1	3	9	17	2.12
40	Mindful of how it looks from the air (many will fly over the site).	0	3	3	6	10	22	1.95
41	More attractive/enticing than San Francisco.	1	0	2	7	12	22	1.68

Important Footnotes:

The workshop attendee were exclusively members of the local community, and therefore international considerations were likely missed in the weighting.

In reviewing these results, please take into consideration that many or the participants in the workshop had to leave early and were not part of some part of the voting process. Therefore, the scores and weighting may have been affected